

AUTOMATIC SEWING SYSTEMS

AUTOMATIC LOADING SYSTEM FOR PANTYHOSE SUITABLE FOR LINE CLOSERS (LC) AND GUSSET LINE CLOSERS (GLC)

P&P-S2 + AL2



AUTOMATIC SEWING SYSTEMS

P&P-S2 + AL2

Automatic loading system for pantyhose suitable for Line Closers (LC) and Gusset Line Closers (GLC).

This system comprises of a new Pick & Place robot, with reduced sizes, which picks up hosiery tubes piled in a trough and, once oriented (toe and welt), are sent by air to the automatic loader AL2.

It is possible to automatically load many models of LC and GLC, and for these Santoni can also supply a positioning device NPD to position the waistband and the body-leg change, and also styles with T-bands and bikinis.

The simplicity of this system allows an easy adjustment of the machine when changing styles, and gives a high level of efficiency, which is very advantageous when loading subsequent machines.

AUTOMATIC SEWING SYSTEMS

P&P-S2 + AL2

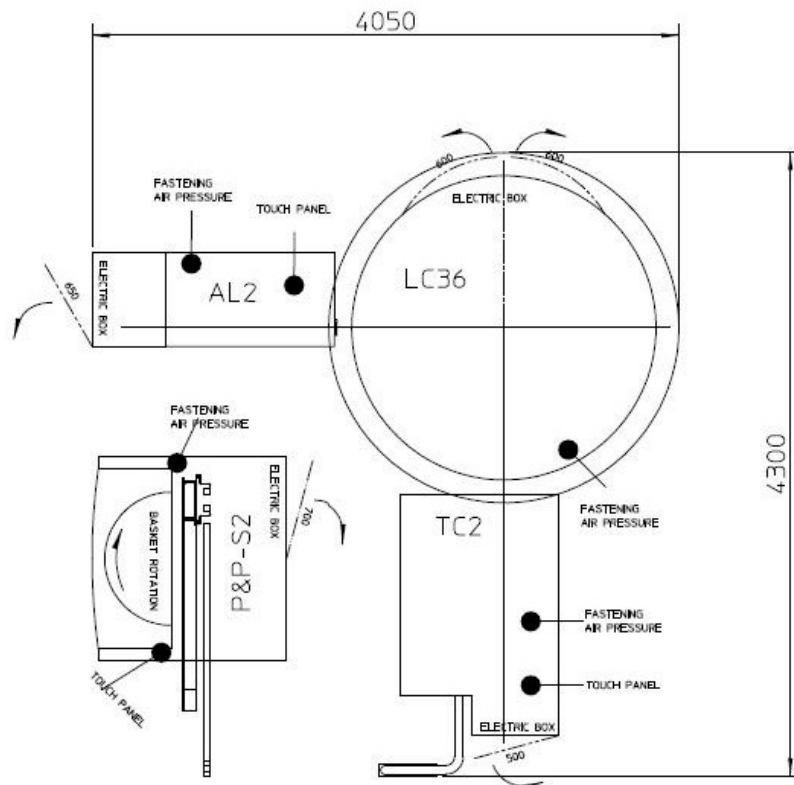
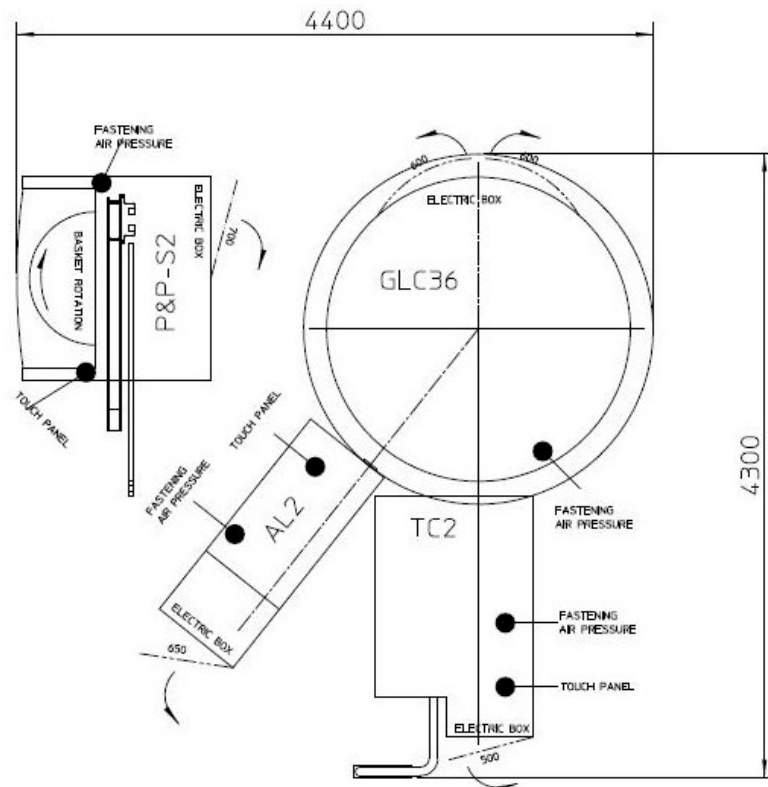
Specification	P&P-S2+AL2-L	P&P-S2+AL2-G
Air pressure	6 bar	6 bar
Air consumption	300 NI/min	300 NI/min
Absorbed power	10 Kw	10 Kw
Minimum cycle time	6 Sec.	7,5 Sec.
Max. Production	50 Dz/hr (pair)	33 Dz/hr (pair)
Avg. Production	40 Dz/hr (pair)	40 Dz/hr (pair)

Available models	Features
P&P-S2	Automatic Pick & Place for pantyhose with single picker to feed LC and GLC machines minimizing the cost
AL2-L	Automatic loader for LC
AL2-G	Automatic loader for GLC

DISCLAIMER:

Technical data given in this brochure are for information only. Santoni S.p.A. reserves the right to modify the machine features without forewarning and without the obligation to apply any modification to the machines already installed. Pictures are exemplifying and have not to be regarded as a reference.

Santoni is recommending needles from
GROZ-BECKERT®





SANTONI SPA

Via Carlo Fenzi, 14 - 25135 Brescia - Italy
Tel. +39 030 37671 Fax +39 030 3767400
P.IVA e CF: IT 00273280172
info.santoni@santoni.com - www.santoni.com